

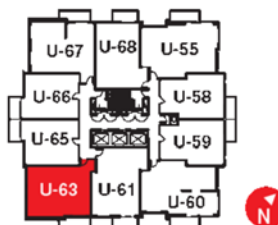
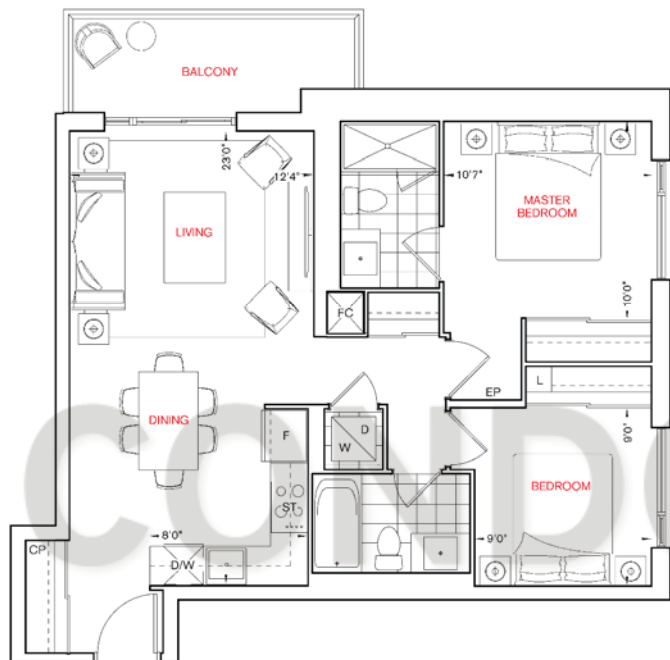
PARFAIT



2B (2 Bedrooms)

\$451,000

808 SQFT *



TYPICAL FLOOR

* Prices & specifications are subject to change without notice. All dimensions are approximate and subject to normal construction variances. Dimensions may exceed the useable floor area. Furniture is displayed for illustration purposes only and does not necessarily reflect the electrical plan for the suite. Suites are sold unfurnished. Illustrations are artist's concept only. Specifications subject to change without notice. E.&O.E. February 2016

©Tridel 2016 Tridel Built for Life© Tridel Built Green. Built for Life® are registered trademarks of Tridel and used under license. All rights reserved.